

FUTURE OF NURSING™

Campaign for Action



Robert Wood Johnson Foundation

AARP Foundation®

The Role of Nurses in Building a Culture of Health

AACN's 2017 Master's Education Conference
February 25, 2017

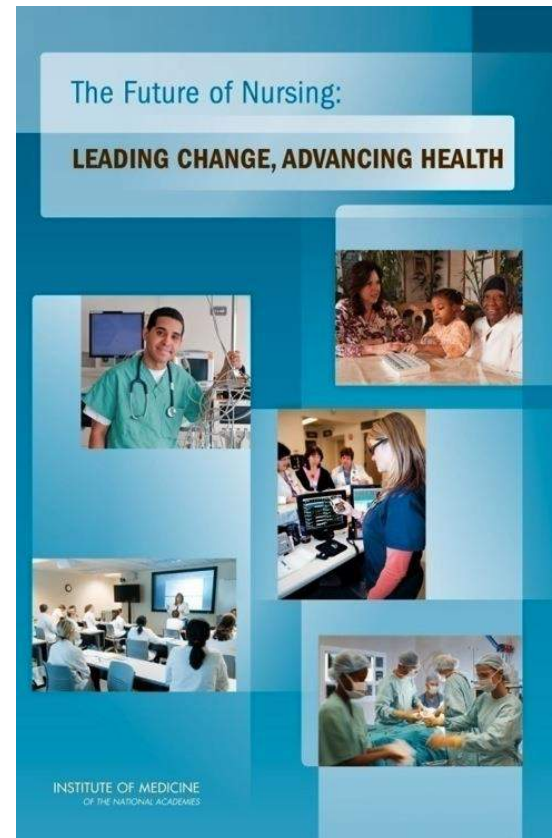
Susan B. Hassmiller, PhD, RN, FAAN, RWJF Senior Adviser
for Nursing, and Director, Campaign for Action



@suehassmiller
@campaign4action

Landmark report:

- Offers recommendations to transform health through nursing
- Re-conceptualizes roles for nurses



Campaign Vision

FUTURE OF NURSING™
Campaign for Action*

Everyone in America can live a healthier life, supported by a system in which nurses are essential partners in providing care and promoting health



Robert Wood Johnson Foundation



Areas of Focus



Education



Practice & Care



Leadership



Diversity



**Interprofessional
Collaboration**

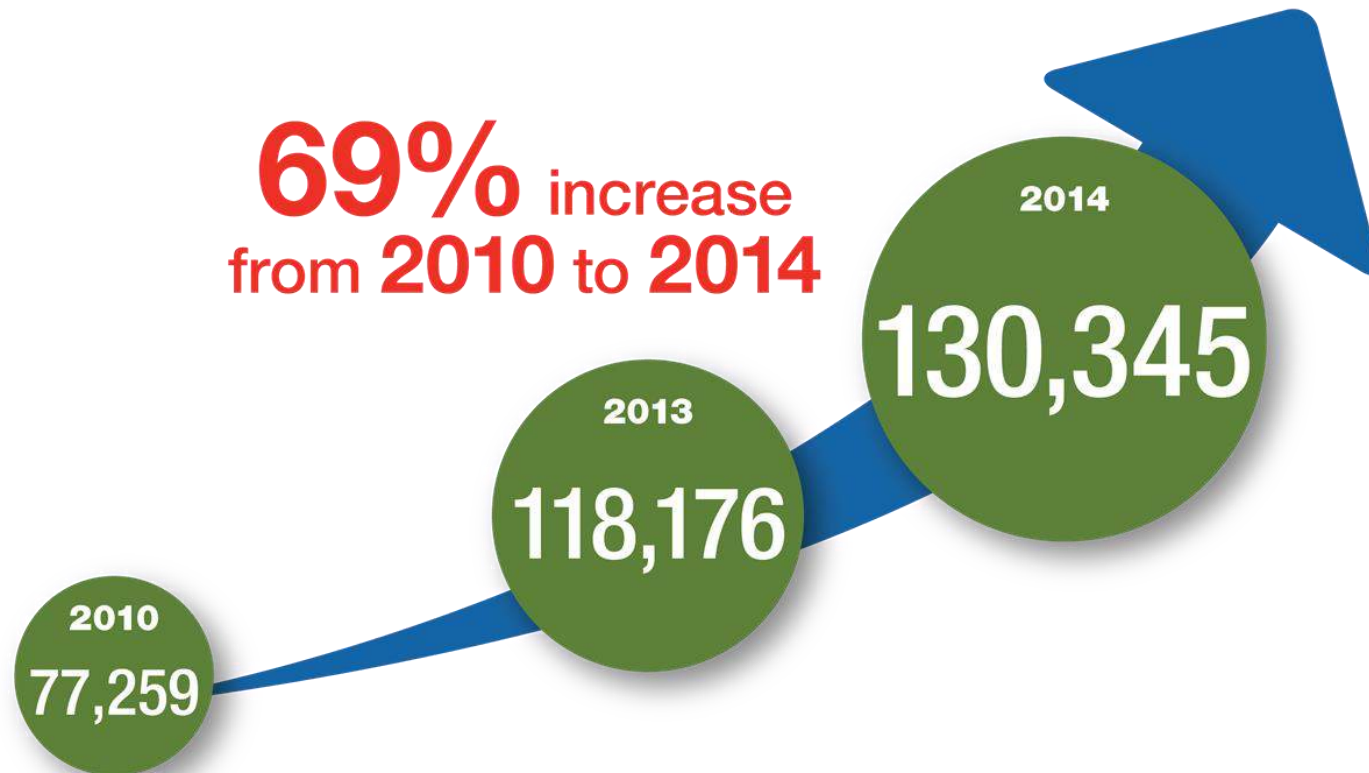
IOM Report: Prepare more nurses to earn baccalaureate degrees and higher and to engage in lifelong learning

Progress:

- 1) Strong academic progression programs
- 2) More nurses graduating with BSN degrees than associate's degrees starting in 2012



Number of Students in RN-to-BSN programs



Source: American Association of Colleges of Nursing

IOM Report: Promote nursing leadership and prepare nurses for board positions

Progress:

- 1) Formed Nurses on Boards Coalition
- 2) 2,649 nurses serve on boards
- 3) Goal: reach 10,000 by 2020



www.nursesonboardscoalition.org

IOM Report: Better collaboration between professionals will improve care

Progress:

- Top nursing schools are increasing the number of interprofessional classes offered



IOM Report: Nurses should reflect the population in terms of race, gender and ethnicity

Progress:

1. Nearly all Action Coalitions implementing diversity strategies
2. 30.1% of BSN grads in 2014 represent minority populations (up from 24.1% in 2005)
3. Number of minority students enrolled in advanced nursing education is about 30%



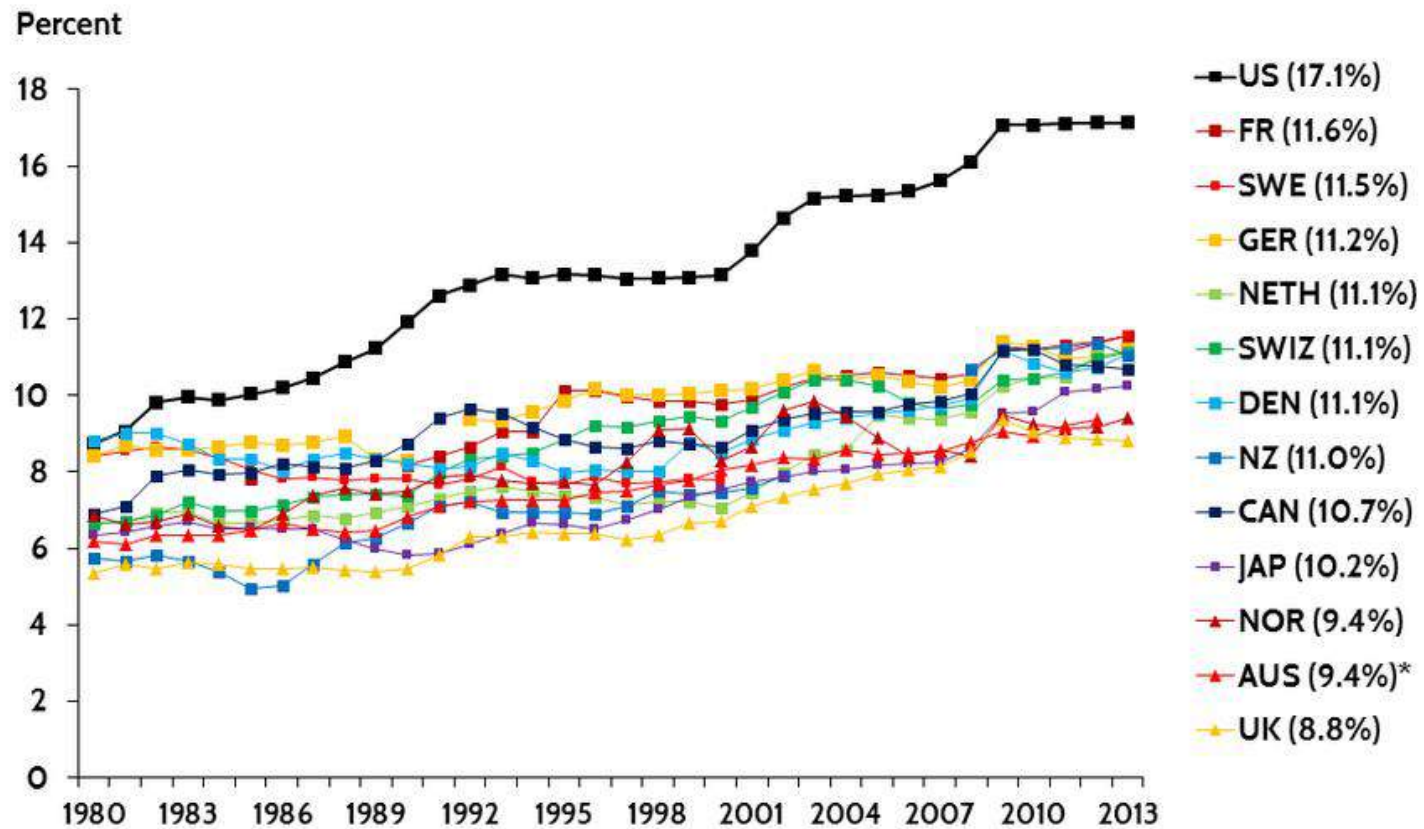
Next Steps

- Continue to advance the IOM recommendations
- Reach out to new and diverse stakeholders to build a Culture of Health



U.S. Health Care Spending

Exhibit 1. Health Care Spending as a Percentage of GDP, 1980–2013



Source: OECD Health Data 2015; table prepared by Commonwealth Fund.

Health tied to:

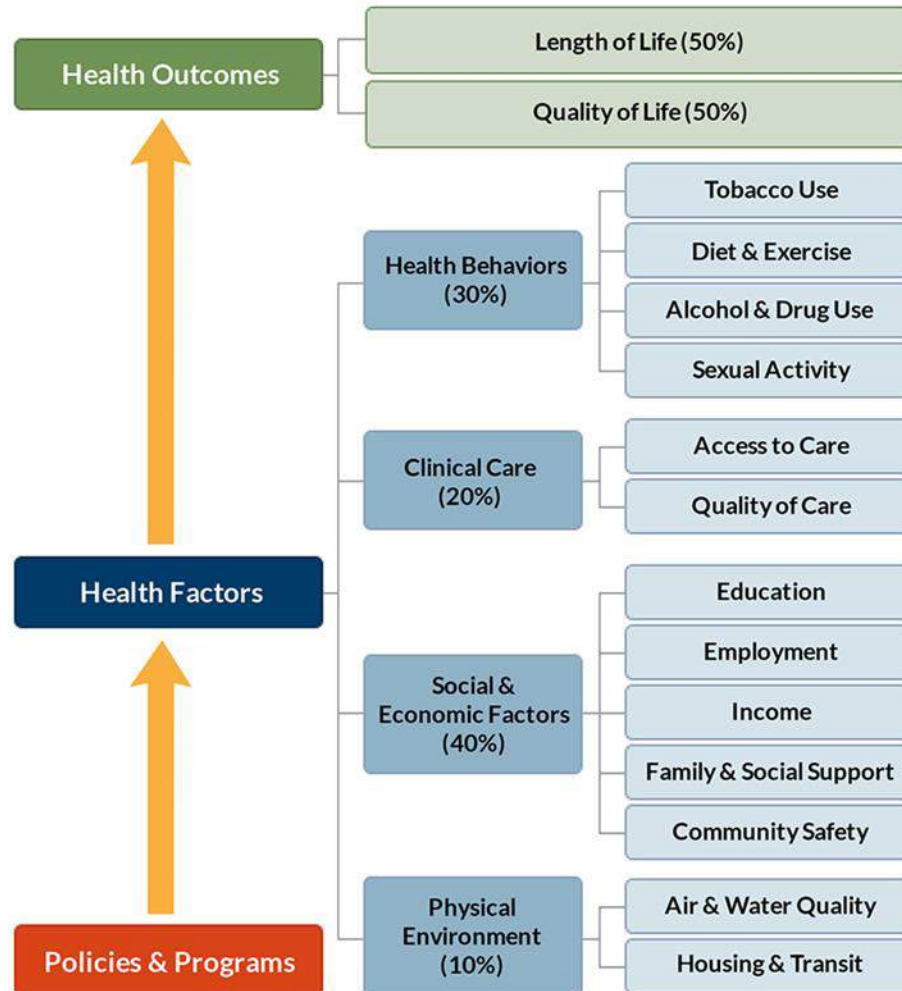
- How much money people make
- How much school they've completed
- Neighborhoods they live in



Copyright <2009> Rodger Tully

The choices we make are
based on the choices we have

Many Factors Affect Health



County Health Rankings model © 2014 UWPHI

We, as a nation, will strive together to build a Culture of Health enabling all in our diverse society to lead healthy lives, now and for generations to come



Copyright <2014> Paul Chouy

Many Partners...



Copyright <2006> Rodger Tully



Copyright <2014> Mike Belleme



Copyright <2008> Lynn Johnson



Copyright <2008> Ed Keshi

...Including Nurses



Copyright <2011> Tyrone Turner

University of Tennessee College of Nursing Building a Culture of Health

FUTURE OF NURSING™
Campaign for Action*



Curriculum Must Cover:

- Prevention and wellness
- Care across the continuum
- Social determinants of health
- Health disparities and inequities



11th Street Family Health Services

Source: AAN

How much does *your* School of Nursing curriculum incorporate the social determinants of health?

- 1) Very little
- 2) Some
- 3) A lot

Created new curriculum:

- More closely aligned with evolving and enhanced roles of RNs beyond hospital walls
- Content stresses safe and effective primary care services
- Students prepared with knowledge and skills in:
 - Care coordination
 - Chronic disease prevention
 - Population health
 - Team-based, interprofessional care
- Emphasis on leveraging community partnerships



Source: Bouchaud, Mary, et al. "Accelerating design and transforming baccalaureate nursing education to foster a culture of health." (2016).

Form Partnerships

AACN-CDC Public Health Initiative: Supports faculty development in area of population health and connects nursing students with hands-on experience



<https://www.cdc.gov/ophss/csels/dsepd/academic-partnerships/index.html>

INVEST IN YOUR COMMUNITY

4 Considerations to Improve Health & Well-Being *for All*

WHAT Know What Affects Health

40% SOCIOECONOMIC FACTORS
20% CLINICAL CARE
30% HEALTH BEHAVIORS
10% PHYSICAL ENVIRONMENT

www.countyhealthrankings.org

WHERE Focus on Areas of Greatest Need

Your zip code can be more important than your genetic code. Profound health disparities exist depending on where you live.

WHO Collaborate with Others to Maximize Efforts

HOW Use a Balanced Portfolio of Interventions for Greatest Impact

- Action in one area may produce positive outcomes in another.
- Start by using interventions that work across all four action areas.
- Over time, increase investment in socioeconomic factors for the greatest impact on health and well-being for all.

Four ACTION Areas

SOCIOECONOMIC FACTORS

PHYSICAL ENVIRONMENT

HEALTH BEHAVIORS

CLINICAL CARE

→ VISIT www.cdc.gov/CHInav FOR TOOLS AND RESOURCES TO IMPROVE YOUR COMMUNITY'S HEALTH AND WELL-BEING

MARCH 2015

www.cdc.gov/CHInav

AACN's Master's Education Conference, Susan B. Hassmiller, February 25, 2017

23



Ready to take action, but not sure what to do next?

[GET HELP](#)

Action Steps

- [Work Together](#)
- [Assess Needs & Resources](#)
- [Focus On What's Important](#)
- [Choose Effective Policies & Programs](#)
- [Act on What's Important](#)
- [Evaluate Actions](#)
- [Communicate](#)

Action Center

Each step on the Action Cycle is a critical piece of making communities healthier. There is a guide for each step that describes key activities within each step and provides suggested tools, resources, and additional reading. You can start at Assess or enter the cycle at any step. Work Together and Communicate sit inside because they are needed throughout the Cycle.

At the core of the Action Cycle are people from all walks of life because we know we can make our communities healthier if we all get involved.

Select an Action Step or community member to learn more.



www.countyhealthrankings.org

Take 5:

- What are some of the ways that your School of Nursing incorporates the social determinants of health into the curriculum?
- What are some of your ideas to strengthen the link between academia and practice?
- How is your school working to build a Culture of Health?
- What more can your school be doing?

Get Involved: Nurse Faculty

Faculty can:

- Teach social determinants of health in your classes
- Prepare students for new roles
- Offer classes in community care, business and finance, interprofessional collaboration and population health
- Encourage students to continue their education
- Participate in research that improves nursing education
- Form partnerships to build a Culture of Health




Get Involved!

FUTURE OF NURSING™
Campaign for Action

Visit us on the web at
www.campaignforaction.org

Campaign for Action

ABOUT ISSUES OUR NETWORK BLOG RESOURCES GET INVOLVED Q



We're building a
healthier America
through nursing.

LEARN MORE ABOUT US



<http://facebook.com/campaignforaction>



www.twitter.com/campaign4action