



**Samford
University**

Cultivating Cultural/Spiritual Interview Skills in Nursing Online Learning

Ashley York, DNP, AGNP-C, WHNP-BC, NCMP, COI

Learning Objective

Identify how the use of an LMS can promote active learning in an online health assessment course

No financial disclosures

Overview of Need

Online Learning Challenge

Online
Engagement

Social
Presence

Student
expression

Active
learning
online

Assignment Creation

Sample Learning Objectives

Course

- SLO 3 — Demonstrate cultural/spiritual sensitivity and competence in the collection of assessment information and physical assessment findings.

Module

- Discuss how cultural competence in the role of the nurse is necessary to make accurate assessments with cultural beliefs and values in mind.(SLO 3)
- Differentiate between skills needed for a general routine cultural screening versus skills needed for a focused cultural assessment. (SLO 1, 3)
- Describe to parts of a cultural and spiritual assessment. (SLO 3)
- Discuss the differences between religion and spirituality and the influence of each on health. (SLO 3)
- Explain how to complete a non-formal and formal spiritual assessment with focused questions (SLO 1, 3)

Powerful transparent assignment template

- Name and due date
- Instructions
- Purpose
 - Course learning objectives
- Requirements
- Criteria for success/detailed rubric

Criteria for Success

APA Style
including Spelling
and Grammar

Patient Response

Communication

Posts

Professionalism

Nurse
assessment

Assignment Creation in LMS

- Student place in groups
- Discussion format in LMS
- Choice of questions or tool
- Use of video or voice recording
 - Face to face or asynchronously
- Initial posting and response due dates

ASSESSMENT TOOL 12-4

HOPE Questions for Spiritual Assessment

CATEGORY	SAMPLE QUESTIONS
H: sources of hope	What are your sources of hope, strength, comfort, and peace? What do you hold on to during difficult times?
O: organized religion	Are you part of a religious or spiritual community? Does it help you? How?
P: personal spirituality and practices	Do you have personal spiritual beliefs? What aspects of your spirituality or spiritual practices do you find most helpful?
E: effects on medical care and end-of-life issues	Does your current situation affect your ability to do the things that usually help you spiritually? As a doctor, is there anything that I can do to help you access the resources that usually help you? Are there any specific practices or restrictions I should know about in providing your medical care? If the patient is dying: How do your beliefs affect the kind of medical care you would like me to provide over the next few days/weeks/months?

Saguil, A., & Phelps, K. (2012). The spiritual assessment. *American Family Physician*, 86(6), 546–550, Table 2, adapted with permission from Anandarajah, G., & Hight, E. Spirituality and medical practice: using the HOPE questions as a practical tool for spiritual assessment. *American Family Physician*. 2001;63(1):87.



ASSESSMENT TOOL 12-5

FICA Spiritual History Tool

The acronym FICA can help structure questions in taking a spiritual history by health care professionals.

F—Faith and Belief

“Do you consider yourself spiritual or religious?” or “Is spirituality something important to you” or “Do you have spiritual beliefs that help you cope with stress/ difficult times?” (Contextualize to reason for visit if it is not the routine history.)

If the patient responds “No,” the health care provider might ask, “What gives your life meaning?” Sometimes patients respond with answers such as family, career, or nature.

(The question of meaning should also be asked even if people answer yes to spirituality.)

I—Importance

“What importance does your spirituality have in your life? Has your spirituality influenced how you take care of yourself, your health? Does your spirituality influence you in your health care decision making (e.g., advance directives, treatment, etc.)?”

C—Community

“Are you part of a spiritual community? Communities such as churches, temples, and mosques, or a group of like-minded friends, family, or yoga can serve as strong support systems for some patients. Can explore further: Is this of support to you and how? Is there a group of people you really love or who are important to you?”

A—Address in Care

“How would you like me, your health care provider, to address these issues in your health care?” (With the newer models, including diagnosis of spiritual distress, **A** also refers to the Assessment and Plan of patient spiritual distress or issues within a treatment or care plan.)


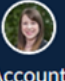
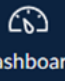


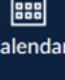
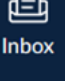
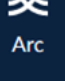
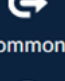
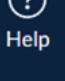
© Copyright Christina M. Pulchalski, MD, 1996. Used with permission. Permission from The George Washington Institute for Spirituality and Health. FICA spiritual history tool. Available at <http://www.gwumc.edu/gwish/clinical/fica.cfm>



**Samford
University**

Table 3. The Open Invite Mnemonic

<i>Category</i>	<i>Sample questions</i>
Open (i.e., open the door to conversation)	May I ask your faith background? Do you have a spiritual or faith preference? What helps you through hard times?
Invite (i.e., invite the patient to discuss spiritual needs)	Do you feel that your spiritual health is affecting your physical health? Does your spirituality impact the health decisions you make? Is there a way in which you would like for me to account for your spirituality in your health care? Is there a way in which I or another

-  Home
-  Account
-  Dashboard
-  Courses
-  Groups
-  Calendar
-  Inbox
-  Arc
-  Commons
-  Help

- Chat
- Arc
- Echo360
- LockDown Browser
- Office 365
- People
- Assignments
- Conferences
- Quizzes
- Files
- Settings

- [Health Assess Group 10](#)
- [Health Assess Group 11](#)
- [Health Assess Group 13](#)



Cultural and Spiritual Interview

Ashley York

Jun 29 at 8:42am

This is a discussion paired into groups of two. You will review the corresponding slides with notes on cultural and spiritual assessment along with the text reading. Once you have done this you will create a voice or video recording of yourself assuming the role of a nurse interviewing a patient during a health assessment interview. You will then respond to your partner's questions as if you are the patient in a video or voice recording. Each partner will chose two different questions. You can post to the discussion which numbers before recording. Initial postings will be due **Thursday, July 5th by 2330**. Your response will be due by **Sunday, July 8th by 2330**. If your partner does not post complete the assignment with the questions you did not record as a nurse to receive full credit. **Late submissions will result in a zero.** This will count for 10 prep activity grade points.

Purpose: Demonstrate cultural and spiritual sensitivity and competence by performing an informal assessment in the role of the nurse and patient. (SLO 3)

Requirement:

- Post in the forum a recording (voice or video) asking the chosen two questions to your partner as if you are a nurse by Thursday.
- Respond back to the posted recording of the two questions with your answers to the questions as if you are a patient by Sunday.
- Optional: provide feedback via text post on body language, inflection or other observations from the recording to your partner.

Questions

1. "Is there anything I should know about your culture, beliefs, or religious practices that would help me take better care of you?"
2. "Do you have any dietary restrictions that we should consider as we develop a food plan to help you lose weight?"
3. "Your condition is very serious. Some people like to know everything that is going on with their illness, whereas others may want to know what is most important but not necessarily all the details. How much do you want to know? Is there anyone else you would like me to talk to about your condition?"
4. "What do you call your illness and what do you think caused it?"
5. "Do any traditional healers advise you about your health?"

This topic was locked Jul 8 at 11:30pm.

Unread

↩ Reply



This is a graded discussion: 50 points possible due May 26 at 11:55pm

Since this is a group discussion, each group has its own conversation for this topic. Here are the ones you have access to:

- Group 1 3
- Group 2 6
- Group 3 4

Cultural and Spiritual Interview

Apr 25 at 2:53pm



Cultural Competence is a term used in regards to being aware of and respecting an individual's different traditions and lifestyle. As advance practice nurses, the goal is to provide care that will not be in conflict with the patient's culture while improving their quality of health. The basis for a cultural assessment and spiritual assessment is to allow the provider to discover and understand the patient's values, beliefs, perspectives, and traditions. Health care providers with a good knowledge foundation combined with cultural sensitivity will produce positive outcomes for both the provider and their patients.

Instructions

This is a discussion paired into groups of two. You will review the corresponding slides with notes on cultural and spiritual assessment. Once you have done this you will create a voice or video recording of yourself assuming the role of a nurse interviewing a patient during a health assessment interview. You will then respond to your partner's questions as if you are the patient in a video or voice recording. Each partner will answer *one of the provided cultural/spiritual assessments*. (These are located on the page Cultural and Spiritual Interview materials in the material section) Each partner will need to utilize a differnt cultural tool. You can post to the discussion which cultural tool you plan to use so your partner can choose a differnt tool. Initial postings will be due **Thursday, May 23rd by 11:55 pm**. Your response to your partner's nurse interview will be due by **Sunday, May 26th by 11:55 pm**. If your partner does not post their nurse interview questions please contact me no later than Friday by 5:00 pm. **Late submissions will result in a zero.**

Purpose: Demonstrate cultural and spiritual sensitivity and competence by performing an informal assessment in the role of the nurse and patient. CLO 1& 6, SLO 6 &8

Requirements:

- Post in the forum a recording (voice or video) asking the chosen cultural assessment to your partner as if you are a nurse by Thursday.
 - [HOPE assessment.pdf](#)
 - [OPEN assessment.pdf](#)
 - [FLCA.pdf](#)
- Respond back to the posted recording with your answers to the questions as if you are a patient by Sunday.
- Follow the rubric attached to the assignment.
- Post references in APA 6th edition.
- Optional: provide feedback via text post on body language, inflection or other observations from the recording to your partner.

Search entries or author Unread 👁 📄 📄

↩ Reply



Account

Dashboard

Courses

Groups

Calendar

Inbox

Studio

Commons

Help

Search entries or author

Unread

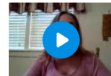


Reply



Matthew Prosser

May 21, 2019



Reply



Matthew Prosser

May 21, 2019

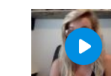
Pulchalski, C. M. (n.d.). FICA Spiritual History Tool. Retrieved May 21, 2019, from <https://smhs.gwu.edu/gwish/clinical/fica/spiritual-history-tool>

Reply



Emily Gralle

May 23, 2019

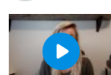


Reply



Emily Gralle

May 23, 2019



Reply



Emily Gralle

May 23, 2019

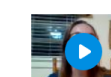
Sagull, A. (2012, September 15). The Spiritual Assessment. Retrieved from <https://www.aafp.org/afp/2012/0915/p546.html>

Reply



Matthew Prosser

May 25, 2019



Reply



Previous

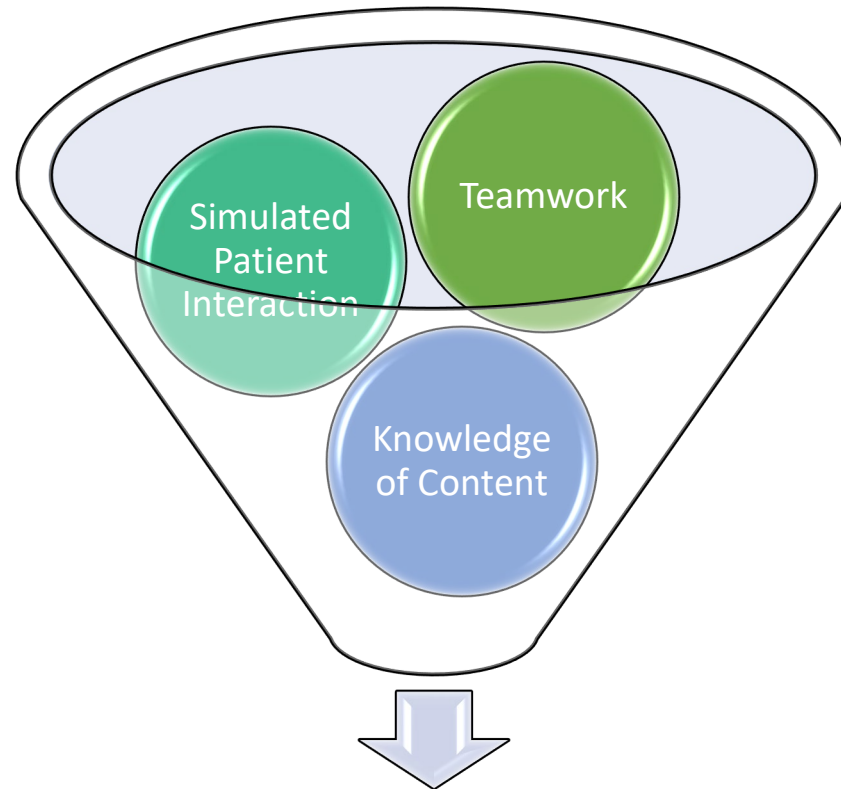
Next



Samford University

Cultural and Spiritual Interview					
Criteria	Ratings				Pts
APA Style including Spelling and Grammar Post the APA reference to all tools used. Range <input type="checkbox"/>	5 pts Exceptional 0 -1 error in APA, spelling or grammar.	2.5 pts Meet Expectations 2-3 errors in APA, spelling or grammar.	2.5 pts Needs Improvement 4-5 errors in APA, spelling or grammar.	0 pts Not Addressed 6 or more errors in APA, spelling and grammar	5 pts
Patient Response Range <input type="checkbox"/>	10 pts Exceptional Responded fully to all asked assessment questions.	7 pts Meet Expectations Responded partially to some asked questions. Used one word answers instead of sentence response.	5 pts Needs Improvement Responded partially to all asked assessment questions. Used one word answers instead of sentence response.	0 pts Not Addressed Did not identify tool used.	10 pts
Communication Range <input type="checkbox"/>	10 pts Exceptional Clear articulation of all asked and answered questions.	7 pts Meet Expectation Partial articulation (mumbled) of asked and answered questions.	5 pts Needs Improvement Poor articulation (mumbled etc) of asked and answered questions.	0 pts Not Addressed Most questions and answer not understood or heard.	10 pts
Posts Range <input type="checkbox"/>	5 pts Exceptional Posted 2 recordings or videos. 3rd post with references.	4 pts Meet Expectations Posted 2 recordings of videos. Missing post with references.	2.5 pts Needs Improvement Only one post of the three required.	0 pts Not Addressed No posts	5 pts
Professionalism Range <input type="checkbox"/>	10 pts Exceptional Professional dress. Hair, makeup, and posture professional. Professional	7 pts Meets Expectations Partial Professional dress. Hair, makeup, or posture partially	5 pts Needs Improvement Partial professional dress. Hair, makeup, and posture partially	0 pts Not Addressed Both recordings or videos display unprofessional behaviors and appearance	10 pts

Summary



Compassionate Cultural/Spiritually Sensitive Nurses

References

- American Association of Colleges of Nursing. (2018). Defining scholarship for academic nursing task force consensus position statement. Retrieved from <http://www.aacnnursing.org/News-Information/Position-Statements-White-Papers/Defining-Scholarship-Nursing>
- Saguil, A., & Phelps, K. (2012). The spiritual assessment. *American Family Physician, 86*(6), 546-550. Retrieved from <https://www.aafp.org/afp/2012/0915/p546.html#afp20120915p546-en>
- Stavredes, T. (2011). *Effective online teaching: Foundations and strategies for student success*. San Francisco: Jossey-Bass Inc Pub.
- Winkelmes, M. (2013). Transparency in teaching: Faculty share data and improve students' learning. *Liberal Education, 99*(2).