

Interprofessional Connections and Educational Innovation Inspire and Prepare BSN Graduates to Care for Underserved Populations

Sandy Mixer, PhD, RN, CTN-A, Associate Professor
TRIP Grant Principle Investigator/Project Director

Lora Beebe, PhD, PMHNP-BC, FAAN, Professor
TRIP Grant Lead Faculty & Dissemination Coordinator

Chris Brown, DNP Candidate, MSN, APRN, FNP-BC, CNE, Clinical Instructor, TRIP Sustainability Faculty



THE UNIVERSITY OF
TENNESSEE
KNOXVILLE
BIG ORANGE. BIG IDEAS.®



1

HRSA-NEPQR-RNPC

This project is supported by Grant Number UK1HP31710 from the Health Resources and Services Administration (HRSA), of the U.S. Department of Health and Human Services as part of an award totaling \$2,659,027. Its contents are solely the responsibility of the authors and do not necessarily represent the official views of, nor an endorsement by HRSA, HHS, or the U.S. Government.

Disclosure



THE UNIVERSITY OF
TENNESSEE
KNOXVILLE
BIG ORANGE. BIG IDEAS.®



2

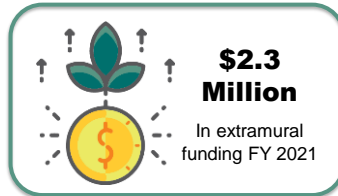
Leading Care. Creating Partnerships. Improving Health.



Over 1200 Students TBSN, ABSN, RN to BSN, DNP, & PhD

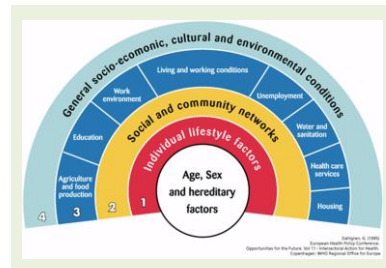
Mission

We are catalysts for optimizing health through nurse-led care by integrating education, practice, research, and technology. We define health broadly and impact it by addressing policy and social issues through advocacy and leadership. Fueled by our commitment to communities, families, and individuals, we seek partnerships to create innovative solutions that improve health for all.



3

Background: National Call



↑ persons with chronic diseases and complex healthcare needs

Access to care for urban/rural underserved populations
SDOH & Health Equity

Unprecedented need for RNs expanded roles in preventative, primary, & chronic care
RN functions at top of scope of practice

Call for a Shift in Nursing Education & Practice



4

Transforming RN Roles in Community-Based Integrated Primary Care through Academic Practice Partnership (TRIP)

Prepare BSN students to practice at the full scope of their license:

- Leaders in interprofessional teams
- Community-based integrated primary care settings
- Culturally diverse urban and rural underserved populations



5

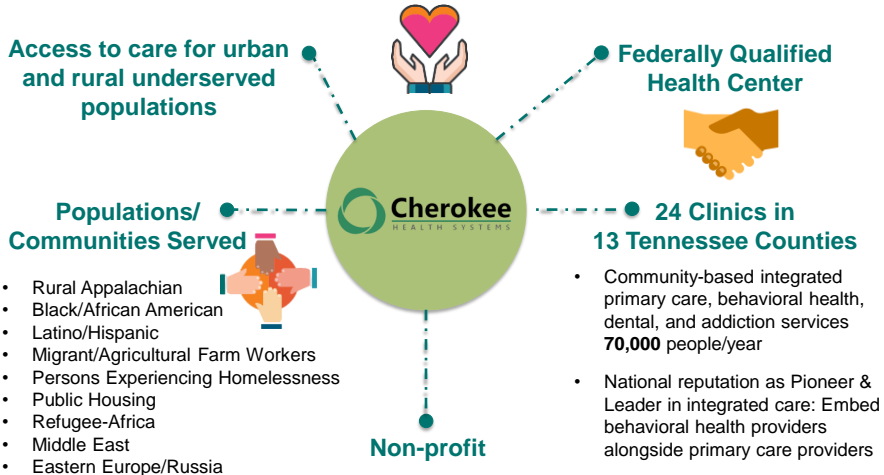
TRIP Focus

- 1** Expand academic-practice partnership between the University of Tennessee College of Nursing and Cherokee Health Systems
- 2** Build and implement an innovative BSN curricular model
- 3** Develop the RN workforce (practicing nurses and faculty) in primary care and leadership development



6

Partner: Cherokee Health Systems – Integrated Care



7

Population Served

20% clinic patients on State Medicaid waiver Program compared to 12% for all county residents

38%

Clinic patients are uninsured compared to 13% for all county residents

Counties HRSA designated as MUA and HPSA

Unique aspects of each county

Knox County

Large # Persons experiencing homelessness – 57% report hx alcohol or substance use

Hamblen County

Rural: Migrant & Seasonal Farm Workers 10.9% of population compared to 4.8% in state

> 1/3 residents below 200% poverty line



8

Academic-Practice Partnership



Visionary Leadership



Grant Co-created with Win-Win approach



Shared Values



Communication & Flexibility



9

Academic-Practice Partnership: Lessons Learned



Closing Feedback Loops



Make connections between care for patients in acute and community settings



Teach Flexibility; Roll with continual change



10

Gail Jarnigan, BSN, RN



- First thought-More work!
-
- What I found-Ways to make it mutually beneficial!
- Leadership classes: Developed relationships & professional growth
- Work smarter not harder; Developed shared decision making tool to meet PCMH criteria
- Recruitment: 2 Full time and 1 PRN nurse from 1st 2 graduating classes
-
- What we taught-students gain!
- Integrated Healthcare: Mind/body, Patient/family
- Collaboration with team: Treatment team, pharmacy, community health coordinators, PCP
-
- Why should you?
- You have impact on shaping the workforce for you as an employer, you as co-worker, you as a consumer. Primary Care, appealing to some: Today's students are all ages, all walks of life, all stages of life. Primary Care, the Patient Centered Medical Home: Nursing can make a difference. Better Health outcomes start with established relationships, better patient education and patient engagement. All that can start in Primary Care.



11

“This academic clinical partnership by far has been the most rewarding venture in my 35 years of work in nursing.”

“The opportunity to give future nurse leaders a clinical immersion is an investment for the future.”



12

Overall BSN Curricular Changes

- Population Health & SDOH (3)
- Chronic disease prevention, Care Coordination (1)
- Recovery-based mental health, substance use and obesity (1)
- Culturally competent and congruent care for rural/urban underserved populations (1)
- Interprofessional education & Practice (1)
- Academic Service Learning (1)



Students work one-on-one with preceptors during 300 hours 4 semesters clinical immersion in community-based integrated PC

Parentheses: Corresponding AACN Domain



13

Interprofessional Collaboration at Clinic Sites



14

Interprofessional Collaboration in Simulation



Nursing Students



Nutrition Students



Pharmacy Students



Simulation Co-Created

Results: Significant improvements in Efficacy & Performance of 6 activities to support persons with Chronic illness Self-Management



Student Voices



"...it's integrated health. So, when a patient is there to see their practitioner...there's behavioral health consultants there who can meet with them at their current state, which has taught me so much about mental health and the importance of mental health in all areas of nursing."

"It was fulfilling...opened my eyes to the depth of health disparities in impoverished communities... and how I can have a positive impact."

"The TRIP Program really helps you learn how to treat a patient as a whole. It would push you to be the best nurse you can be whether you're going to be a hospital nurse or primary care nurse."



Addressing Behavioral Health

PMHNP Leads Debriefing

Therapeutic use of silence and active listening

Adapting when things don't "go by the book"

Clinical Realities of dealing with SDOH

Ethics, communication, boundaries, resiliency, and collegiality



17

Workforce Development in Leadership/PC Outcomes

Developed Strong Academic-Practice Collaborative Relationships

Increased Knowledge: Leadership, Integrated Behavioral Health & Trauma-Informed Care, QI, LEAN, Care Coordination, Strengths-based Teams, Promoting a Culture of Wellbeing & Team Resilience, Generational Shifts



18



American Association
of Colleges of Nursing

Exemplary Academic-Practice Partnership Award



Innovative and sustained relationship that extends beyond clinical placements and demonstrates positive, measurable outcomes



THE UNIVERSITY OF
TENNESSEE
KNOXVILLE



19

TRIP Grant Outcomes

- 52 BSN Graduates practice at top of scope of license: CBIPC 3 directly to PC
- Sustained Didactic and Clinical Innovations
- Sustained PC clinical immersion with IP care & simulation
- Strong Academic-Practice Partnership
- 22 RN Preceptors
25 Faculty Developed in Primary Care & Leadership
- 550 BSN Graduates Innovative Didactic preventative, primary & chronic care
- 9 Publications
10 Podium & Poster Presentations

Cherokee Health System

Community Practice Partner (CHS)
TRIP Cohort 1 Graduate

Student Role in TRIP grant

- Experiences Guiding Path to Primary Care
- Leadership Value of RN Role in Primary Care

Primary Care Practitioner

- Patient Advocate and Care Coordinator
- Educator

Preceptor Experiences

- Full Care
- Passing Value of RN in Primary Care

20

Questions/Comments Discussion

- smixer@utk.edu
- lbeebe1@utk.edu

“The benefit of TRIP... instead of just seeing the patient when they're sick and in the hospital...you're seeing the whole patient, you see why they are the way they are, you see how they live, what's making them sick, how they manage their medications at home, which is something you don't get in the acute care setting. So, I think the benefit is just seeing the holistic view of the patient instead of just a focused view.

And, that's something you can't trade for anything...
It's such a huge benefit...huge.” TRIP Student



21

TRIP Publications

Beebe, L. H. & Myers, C. (2022). The role of registered nurses in transforming primary care. *American Journal of Nursing*, 122(8), 41-46.

Beebe, L.H., Mixer, S.J., Raynor, H., Taylor, M., Jarnigan, G. & Hammonds, D. (2022). Results from the Transforming RN Roles In Community-Based Integrated Primary Care (TRIP): Lessons learned from clinical partners, students, faculty and the RN work force . Proceedings of the 20th Annual Hawaii International Conference on Education. Waikoloa, Hawaii, January 3-6, 2022. <https://hiceducation.org/proceedings-library/>, page 198.

Beebe, L.H., Mixer, S.J., Taylor, M., Hadjiharalambous, C.S., Craig, J. & Turley, D (2021). Piloting the Transforming RN Roles in Community-Based Integrated Primary Care (TRIP): Student Responses. *Issues in Mental Health Nursing*, 42(6), 591-98..

Beebe, L.H., Elliott, L.E., Whitaker, H. & Gladson, C. (2021). In Our Own Words: Baccalaureate Nursing Students Describe Academic Service Learning Experiences. *SAGE Open Nursing*, April. Doi: <https://journals.sagepub.com/doi/full/10.1177/23779608211010960>

Beebe, L.H., Elliott, L and Mixer, S. (2021). A COVID -related enquiry focused online assignment for undergraduates. *Journal of Nursing Education*. May. Epub ahead of print; <https://doi.org/10.3928/01484834-20210420-15>
Rider, A, Beebe, L.H., & Raynor, H.(2020). *Interprofessional Simulations in Dietetic Education . Weight Management Matters*, Early Fall, 19-20.

Mixer, S.J., Beebe, L.H., Elliott, L.M., Turley, D., Craig, J., Chelko, M. McCoig, C. (2021). Transforming RN roles using an academic-practice partnership to improve healthcare access for underserved populations. *Journal of Professional Nursing*. Available online June 11 print details: vol 37, 459-466. Doi: <https://doi.org/10.1016/j.profnurs.2020.06.006>

Beebe, L.H., Mixer, S.J., Thompson, K., Davis, S., Elliot, L., Lakin, B., Bullard, T., Hurt, M., & Niederhauser, V. (2019). Transforming RN Roles In Community-Based Integrated Primary Care (TRIP): Background and Content. *Issues in Mental Health Nursing*.40(4), 347-353.



22

References

- American Academy of Ambulatory Care Nursing (AAACN) CCTM01-Module 1: Care Coordination and Transition Management: Introduction retrieved January 22, 2018 <https://library.aaacn.org/aaacn/sessions/401/view>
- American Nurses Association. Statements on Workforce. <http://www.nursingworld.org/MainMenuCategories/ThePracticeofProfessionalNursing/workforce> Accessed January 5, 2016.
- AAACN (2017) The preferred vision of the professoriate in baccalaureate and graduate nursing programs, Oct 2017. Retrieved 2-20-2020 from: <https://www.aacnursing.org/news-information/position-statements-white-papers/professoriate>
- Berkowitz, B. Transformation in times of change: President's Message. *Nursing Outlook*. 2017;65, 3-5. <http://dx.doi.org/10.1016/j.outlook.2016.12.007>
- Berkowitz, B. (2016). Registered nurses in primary care: A value proposition. *Nursing Outlook* (64), 525-526. <http://dx.doi.org/10.1016/j.outlook.2016.09.006>
- Beebe, L.H. (2007). History and evolution of nursing. In *Concepts of the Nursing Profession*. Pp. 16-29. United States: Thomson Delmar Learning.
- Beebe, L., Elliott, L., & Mixer, S.J. (2021). A COVID-related enquiry focused online assignment for undergraduates. *Journal of Nursing Education* May. Epub ahead of print: <https://doi.org/10.3928/01484834-20210420-15>
- Beebe, L., Mixer, S.J., Taylor, M. Hadjiharalambous, C., Craig, J., & Turley, D. (2021). Piloting the transforming RN roles in community-based integrated primary care (TRIP) undergraduate curriculum: Student responses. *Issues in Mental Health Nursing*, 42(6), 591-598. 10.1080/01612840.2020.1836537
- Beebe, L.H., Mixer, S.J., Thompson, K., Davis, S., Elliot, L., Lakin, B., Bullard, T., Hurt, M., & Niederhauser, V. (2019). Transforming RN Roles In Community-Based Integrated Primary Care (TRIP): Background and Content. *Issues in Mental Health Nursing*, 40(4), 347-53.
- Bodenheimer, T & Mason, D. Registered Nurses: Partners in Transforming Primary Care. Proceedings of a conference sponsored by the Josiah Macy Jr. Foundation in June 2016; New York: Josiah Macy Jr. Foundation; 2017. http://macyfoundation.org/docs/macy_pubs/Macy_Monograph_Nurses_2016_webPDF.pdf
- Centers for Disease Control and Prevention (2014). The 10 essential public health services. <http://www.cdc.gov/stltpublichealth>
- Cherokee Health Systems, Internal Needs Assessment Report. August 2016.
- Community Practice Partnerships for Health (CCPH) (2013). Guiding principles of partnerships, position statement on authentic partnerships. Retrieved 4-15-2020 from <https://ccph.memberclicks.net/principles-of-partnership>.
- Dossey, B.M. (2000). *Florence Nightingale: Mystic, Visionary, Healer*. Springhouse, PA: Springhouse Corporation.
- Future of Nursing Campaign for Action (2020). Population health and the future of nursing conclusions. <https://campaignforaction.org/resource/population-health-and-the-future-of-nursing-conclusions/>
- Institute of Medicine (2011). *The Future of Nursing-Leading Change, Advancing Health*. National Academies of Health, Washington, DC



23

References

- Japsen, B. Nurse jobs shift from the hospital to the community. *Forbes*. 2015, Dec. 24 <http://www.forbes.com/sites/brucejapsen/2015/12/24/more-nurse-jobs-shift-from-the-hospital-to-the-community/#2715e4857a0b3eeb02302d6a>.
- Knoxville-Knox County Homeless Coalition and Knoxville Homeless Management Information System (KnoxHMIS). Homelessness in Knoxville and Knox County, Tennessee 2013-14. Accessed http://sworpswebapp.sworps.utk.edu/wp-content/uploads/2015/05/2014-Biennial-Study_DRAFT-4.14.14-FINAL.pdf
- Mixer, S.J., Beebe, L.H., Elliott, L.M., Turley, D., Craig, J., Chelko, M. McCoig, C. (2021). Transforming RN roles using an academic-practice partnership to improve healthcare access for underserved populations. *Journal of Professional Nursing*, 37, 459-466. doi: 10.1016/j.profnurs.2020.06.006
- National Advisory Council on Nurse Education and Practice (NACNEP). Preparing nurses for new roles in population health management. 2016. <https://www.hrsa.gov/advisorycommittees/bhpradvisory/nacnep/Reports/fourteentreport.pdf>
- National Center for Farmworker Health. Farmworker fact sheet. Accessed January 22, 2018 http://www.ncfh.org/uploads/3/8/6/8/38685499/haws_ncfh_factsheet_demographics_final_revised.pdf
- National Center for Interprofessional Practice and Education. <https://nexusipe.org/informing/about-national-center> Accessed 1-21-18
- Robert Wood Johnson Foundation. Catalysts for Change: Harnessing the Power of Nurses to Build Population Health in the 21st Century. 2017. <https://www.rwjf.org/content/dam/farm/reports/reports/2017/rwjf440286>
- Robert Wood Johnson Foundation. County Health Rankings & Roadmaps: Building a Culture of Health, County by County. 2017. Tennessee. Accessed January 22, 2018. <http://www.countyhealthrankings.org/app/tennessee/2017/measurefactors/62/data>
- Substance Abuse and Mental Health Services Administration (SAMHSA). Can we live longer? Integrated healthcare's promise. <https://www.integration.samhsa.gov/about-us/what-is-integrated-care>. Accessed 1-18-18
- Thew, J. (2019). The future of nursing report: Where are we now? <https://www.healthleadersmedia.com/nursing/future-nursing-report-where-are-we-now>
- Tennessee Department of Mental Health & Substance Abuse Services. (July 2015). *Opioid abuse in Tennessee*. Retrieved from https://www.tn.gov/content/dam/tn/mentalhealth/documents/Opioid_Abuse_in_TN_July_2015.pdf
- Tennessee Division of TennCare. TennCare Bureau Enrollment Reports for 2016. <https://www.tn.gov/tenncare/information-statistics/enrollment-data.html>
- U.S. Census Bureau. *Tennessee quick facts* <http://quickfacts.census.gov/qfd/states/47000.html>. Accessed January 6, 2018
- US Department of Health and Human Services Health Resources and Services Administration Shortage Designation Advisor. <https://datawarehouse.hrsa.gov/tools/analyzers/hpsafind.aspx>. Accessed, January 10, 2018



24